



Put Your Industrial Athletes On The Starting Line

And Be The First To The Finish Line!

JOIN US AT THE STARTING LINE!

Are productivity, safety and performance constant hurdles?

Tired of products that fall flat and don't last?

Make the changeover from sponge matting to Starting Line.
Starting Line is the first and only product of its kind!

Finally, a product that's comparably priced and fights fatigue in even high foot traffic and wet conditions!

How?

Starting Line is manufactured with a unique process using an incredibly durable material and fatigue-fighting resilient domes that bounce back time and time again!

Water meet your match! Whether it's a wet area or needs hosing down for cleaning, Starting Line can take it!
And at 1/3 the weight of sponge, it's never been easier to roll up and carry away!

- Trim & Nest Sections Together For Custom Lengths & Widths
- Resists Tears
- Maintain Easily
- 3/8" (10 mm) thick
- 95% Post Industrial Recycled Content ♻️



DESIGNED FOR:



AUTOMOTIVE



FULFILLMENT



LAB / PHARM



RETAIL



GENERAL
MANUFACTURING

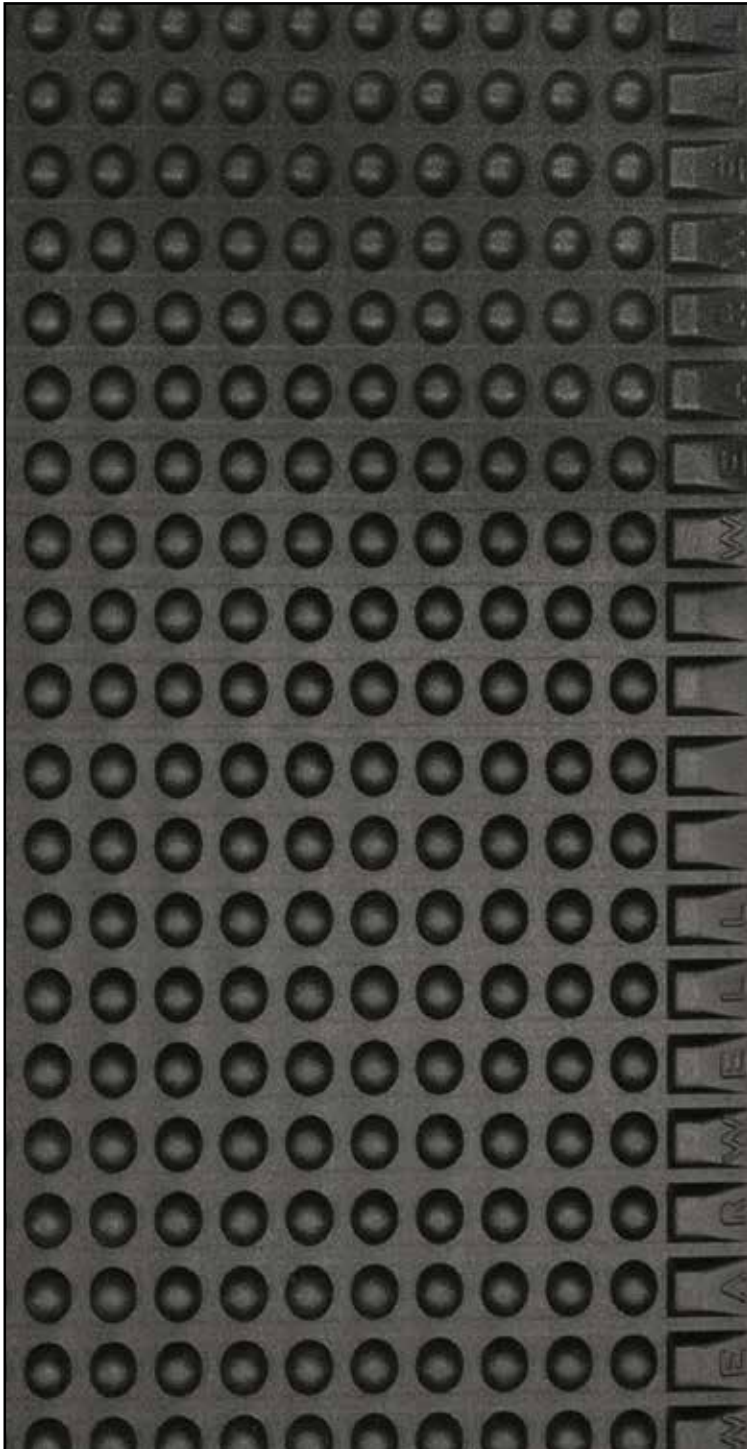
Stats	Starting Line		Sponge
	Tougher Material	Thermoplastic polyolefin (TPO)	Blown PVC
	Broader range of environments	Wet or Dry	Dry only
	Better cleanability	Sweep/shake off or hose down	Sweep
	Longer lasting comfort	Domes quickly rebound	Flattens quickly and slow to rebound
	Longer Lengths	up to 75 feet (22.86 meters)	up to 60 feet (18.28 meters)
	Lighter Weight = Easier handling	.26 lb/sq. ft (1.27 kg/sq. meter)	.8 lb/sq. ft (3.9 kg/sq. meter)
	Double the Life Expectancy	1 year	6 months
	Total cost of ownership	2X life = 1/2 the TCO	1/2 life = 2X the TCO

DON'T SETTLE!

Let's face it, sponge products are subpar. They're susceptible to wear, compression, tearing and absorption. To its credit, sponge is economical. For those facilities needing an anti-fatigue product on a limited budget, there really wasn't another option...not until now!

STARTING LINE VS. SPONGE

We put Starting Line through the wringer the same way we did sponge to demonstrate just how tough Starting Line is. Turns out it's so tough the picture is kinda boring.



Abrasion



Rebound



Tear-Resistance

DON'T BELIEVE IT? REQUEST A SAMPLE AND COMPARE FOR YOURSELF!

WWW.WEARWELL.COM/STARTINGLINE

We Design The World's Best Surfaces For The Industrial Athlete.



Choose Wearwell

Starting Line

Where economy meets durability. A new revolution in anti-fatigue matting and runners is here.

PART NUMBER	UOM	SIZE
300.38x3x75BK	Roll	3' x 75' (.9m x 22.9m)

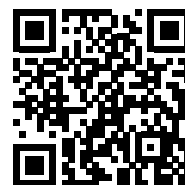
Available in 1 ft increments from 5' up to 75'

COMING SOON!

Watch for additional 2' (.6m) and 4' (1.22m) widths



To Learn More
About Starting Line
Scan The Code –
Watch The Video!



Find Your Anti-Fatigue and Safety Solutions @ www.Wearwell.com

**NEED HELP? We Have Over 70 Field Experts
Across U.S., Canada, Mexico And South America**



NORTH AMERICA

Wearwell, Inc. (Headquarters)
Phone: 1.800.264.3030
info@wearwell.com
www.wearwell.com

MEXICO

www.wearwell.com/mx

UK & IRELAND

Wearwell Europe LTD
Phone: 44.1844.212117
info@wearwell-europe.co.uk
www.wearwell.com/uk

EUROPE

Wearwell Europe LTD
Phone: 31.77.201.4028
europe@wearwell.eu
www.wearwell.com/uk