

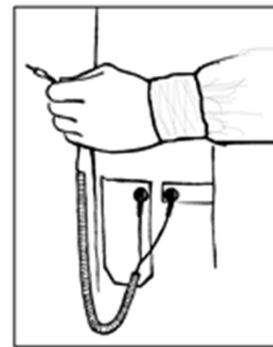
X2-HOJ-23C-(Size)

Tech Wear Style Sheet

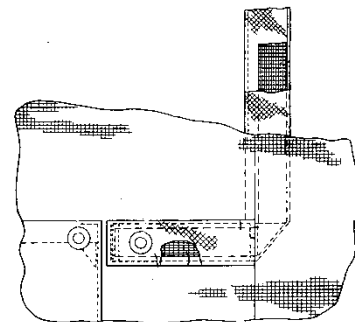


This ESD jacket has Tech Wear's X2 feature, which makes this garment compatible with DUAL continuous monitoring systems, such as the 3M 724 Monitor.

The coat is designed for comfort with a contoured open neckline, roomy raglan sleeves and snap front. The matching ESD knit cuffs and ground snap connections on the left hip pocket allows for hands-free movement without tethering one hand, which is required when using a wrist strap connected to a ground cord.

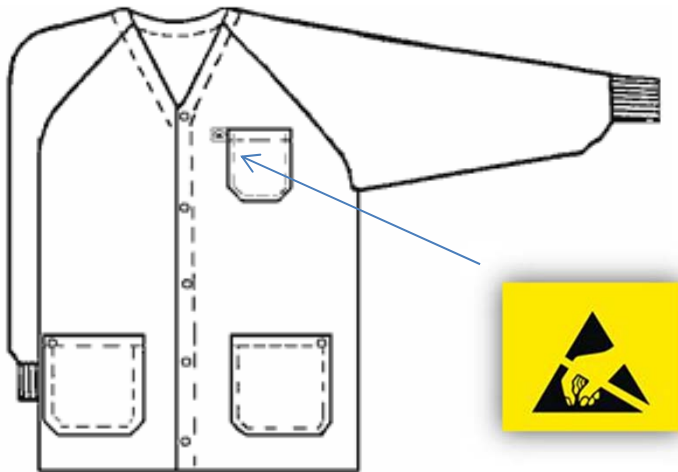


Part Number	X2-HOJ-23C-(Size)
Style	Hallmark Jacket
Colors	Blue
Sleeve	Long sleeve with ESD knit cuffs
Closure	Front Snap
Length	Shorter hip-length jacket
Size range	X-Small thru 8X-Large
Fabric	OFX-100
Content	87% Poly/Carbon 13%
Fabric Weight	2.3 ounces per square yard
Specification	ANSI/ESD STM2.1-Cat. 3
Guarantee	100 wash
Country of Manufacture	USA



X2-HOJ-23C-(Size)

This Hallmark-style jacket comes with two 4mm male ground snaps on the left hip pocket. These snap connections are for attaching a dual-path ground cord. Using the garment in this way eliminates the need for a wrist strap. These connections are also used for testing and/or monitoring that the garment and the wearer are grounded. The “Reaching Hand Symbol” next to the breast pocket indicates that this garment is a tool for the prevention of static discharge. Surface resistivity of the fabric is 1×10^5 and the sleeve-to-sleeve resistance of the garment is guaranteed to stay below 3.5×10^7 for 100 washes or 2 years. This garment meets the requirements of ANSI/ESD STM 2.1-2013, Category 3.



Dimensions for Hallmark Styles												
Size	XS	SML	MED	LRG	XL	2XL	3XL	4XL	5XL	6XL	7XL	8XL
Fits Chest	30-32	34-36	38-40	42-44	46-48	50-52	54-56	58-60	62-64	66-68	70-72	74-76
Finished Chest	41	43	47	50	54	57	60	64	66	70	74	80
Finished Sleeve	30	31	32	34	35	36	36	39	40	40	40	40
Jacket Length	30	31	32	34	35	36	36	39	40	40	41	42

Note: All measurements are rounded to the nearest inch.
 Length measurements are measured from center back of neck to finished hem.
 Finished sleeve is measured from center back of neck to bottom of cuff.