

SOC-23C-(Size)

Tech Wear Style Sheet

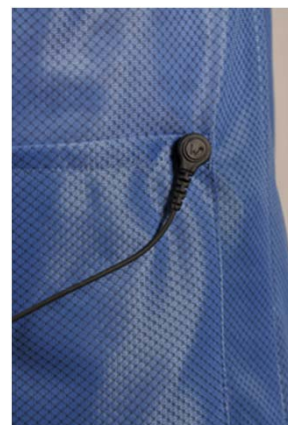


This ESD coat is designed to ground the garment and the wearer through a ground cord connected at the hip pocket snap. This allows for hands-free movement without tethering one hand, which is required when using a wrist strap connected to a ground cord.

The light-weight fabric makes this style one of our most popular garments.

Surface resistivity of the fabric is 1×10^5 and the sleeve-to-sleeve resistance of the garment is guaranteed to stay below 3.5×10^7 for 100 washes or 2 years.

Part Number	SOC-23C-(Size)
Style	Sterling Coat with Raglan Sleeves
Colors	Blue (plus 8 other colors)
Sleeve	Long sleeve with Cuff Option
Closure	Front Snap
Length	Knee-length Coat
Size range	X-Small thru 8X-Large
Fabric	OFX-100
Content	87% Poly/Carbon 13%
Fabric Weight	2.3 ounces per square yard
Specification	ANSI/ESD STM2.1-Cat. 3
Guarantee	100 wash
Country of Manufacture	USA



Standard Ground Cord connected to snap on pocket

(See back for dimensions & additional information)

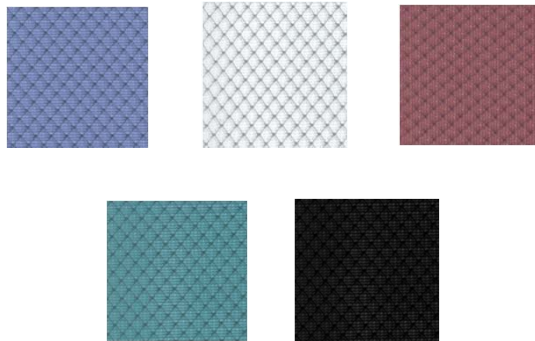
SOC-23C-(Size)

This traditional-style coat comes with 4mm male ground snaps on the hip pockets and grid-knit ESD cuffs at both sleeve terminations. The male pocket snap connection is for attaching a standard ground cord, and the . This connection is also used for testing and/or monitoring that the garment and the wearer are grounded. The “Reaching Hand Symbol” next to the breast pocket indicates this garment is a tool for the prevention of static discharge. This garment is available in most colors for immediate shipment.

Part numbers by color:

Blue	SOC-23C-(Size)
White *	SOC-13C-(Size)
Burgundy *	SOC-33C-(Size)
Teal *	SOC-83C-(Size)
Black *	SOC-93C-(Size)

**these colors are non-standard, custom, and made-to-order.*



Dimensions for SOC-23C										
Size	XS	SML	MED	LRG	XL	2XL	3XL	4XL	5XL	6XL
Fits Chest	30-32	34-36	38-40	42-44	46-48	50-52	54-56	58-60	62-64	66-68
Finished Chest	41	43	46	50	54	57	60	63	66	70
Finished Sleeve	35	36	36	39	41	42	42	42	43	43
Coat Length	30	33	33	33	33	33	33	33	33	33

*Note: All measurements are rounded to the nearest inch.
 Length measurements are measured from center back of neck to finished hem.
 Finished sleeve is measured from center back of neck to bottom of cuff.*

SOC-23-(Size)

Tech Wear Style Sheet



This ESD coat is an effective static shield. The light-weight fabric makes this one of our most popular garments, and the raglan style sleeve (like a baseball jersey) is tailored for easier overhead reaching. Surface resistivity of the fabric is 1×10^5 and the sleeve-to-sleeve resistance of the garment is guaranteed to stay below 3.5×10^7 for 100 washes or 2 years.

Part Number	SOC-23-(Size)
Style	Sterling Coat with Raglan Sleeves
Colors	Blue (8 other colors are available)
Sleeve	Long sleeve with sizing snaps at the wrist
Closure	Front Snap
Length	Knee-length Coat
Size range	X-Small thru 8X-Large
Fabric	OFX-100
Content	87% Polyester/ 13% Carbon
Fabric Weight	2.3 ounces per square yard
Specification	ANSI/ESD STM2.1-Cat. 3
Guarantee	100 wash
Country of Manufacture	USA

(See back for dimensions & additional information)

SOC-23-(Size)

This Sterling-style knee-length coat comes with raglan-style sleeves, lapel collar and the standard 3-pocket configuration. The “Reaching Hand Symbol” next to the breast pocket indicates this garment is a tool for the prevention of static discharge. This Category 1 (ANSI/ESDA STM2.1-2013) static control garment contains 13% carbon and can be made a Category 2 Static Control Garment System with the addition of the grounding features of the ESD grid-knit cuffs (SOC-23C) or Key Option (SOC-23Key). Other colors are available, but they are custom & made-to-order.

Part numbers by color:

Blue	SOC-23-(Size)
White *	SOC-13-(Size)
Burgundy *	SOC-33-(Size)
Teal *	SOC-83-(Size)
Black *	SOC-93-(Size)
Digi-Camo *	SOC-D3-(Size)
Hi-Viz Yello *	SOC-HVY3-(Size)
Hi-Viz Orange *	SOC-HVO3-(Size)

**non-standard, made-to-order.*



Dimensions for SOC-23										
Size	XS	SML	MED	LRG	XL	2XL	3XL	4XL	5XL	6XL
Fits Chest	30-32	34-36	38-40	42-44	46-48	50-52	54-56	58-60	62-64	66-68
Finished Chest	41	43	46	50	54	57	60	63	66	70
Finished Sleeve	35	36	36	39	41	42	42	42	43	43
Coat Length	30	33	33	33	33	33	33	33	33	33

*Note: All measurements are rounded to the nearest inch.
 Length measurements are measured from center back of neck to finished hem.
 Finished sleeve is measured from center back of neck to bottom of cuff.*