

Econoshield™

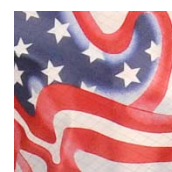
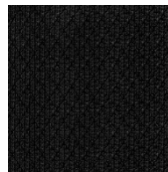
LEQ-13-(Size)

Tech Wear Style Sheet



Tech Wear's EconoShield™ garment is a $\frac{3}{4}$ length jacket that combines an effective static control fabric with a simple and stylish design.

Surface resistivity of the fabric is 1×10^5 and the sleeve-to-sleeve resistance of the garment is guaranteed to stay below 3.5×10^9 for 100 washes or 2 years.



Part Number	LEQ-13-(Size)
Style	Jacket with lapels & collar
Color	White
Sleeve	Long sleeve with wrist snap adjust
Closure	Front Snap
Length	$\frac{3}{4}$ - length – mid-thigh
Size range	X-Small thru 8X-Large
Fabric	ECX-500
Content	98% Poly/Carbon 2%
Fabric Weight	3 ounces per square yard
Specification	ANSI/ESD STM2.1-Cat. 2
Guarantee	100 wash
Country of Manufacture	USA

(See back for dimensions & additional information)

Econoshield™

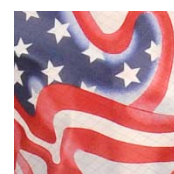
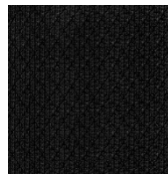
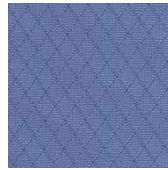
LEQ-43-(Size)

Tech Wear Style Sheet



Tech Wear's EconoShield™ garment is a ¾ length jacket that combines an effective static control fabric with a simple and stylish design.

This static control garment is guaranteed to meet the conductivity standards outlined in ANSI/ESDA STM2.1-2013 (Cat.1) and ANSI/ESDA S20.20-2014 for two years or 100 launderings.



Part Number	LEQ-43-(Size)
Style	Jacket with lapels & collar
Colors	Royal Blue, White, Black & Flag Print
Sleeve	Long sleeve with wrist snap adjust
Closure	Front Snap
Length	¾ - length – mid-thigh
Size range	X-Small thru 8X-Large
Fabric	ECX-500
Content	98% Poly/Carbon 2%
Fabric Weight	3 ounces per square yard
Specification	ANSI/ESD STM2.1-2013 Cat. 1 & ANSI/ESDA S20.20-2014
Guarantee	100 wash or 2 years
Country of Manufacture	USA

(See back for dimensions & additional information)

Technical Data Sheet & Laundry Instructions

Tech Wear's

ECX-500 Fabric used to manufacture

Tech Wear's EconoShield™

Static Control Labcoat

Fabric weight is 3 oz per square yard.
 Color selection: Blue, White, US flag print & Black
 Meets normal FR requirements for polyester fabrics.
 Fabric will not crock or bleed off onto other surfaces.

Fabric content 98% polyester and 2% BASF Resistat™ fiber (carbon-suffused monofilament nylon), knit in grid pattern.

Carbon suffused monofilament nylon is BASF Resistat™ fiber is Conductive at 10⁴ and is non-flaking and non-sloughing.

Surface resistivity of fabric is 10⁶ ohms per square with only slight deterioration noticed after 50 launderings. (To maximum of 10⁹).

Static decay rate per 101C method 5000 volts to 500 in less than 0.1 second.

Finish is disperse-dyed heat set. Contains no softeners, hand builders, etc.

Glass transition rate 450°F, flash point 720°F.

Static Control Performance: Tech Wear 's ECONOSHIELD™ garment, made of ECX-500 fabric has excellent shielding properties and is guaranteed to meet the requirements of ANSI/ESD STM2.1-2013, Category 2, (Category 3 with ESD knit cuffs).

Life Expectancy: Under normal wearing and recommended washing conditions, Tech Wear's exclusive ECX-500 material will maintain its usefulness and effectiveness for a minimum of 100 washings or two years. Tech Wear warrants its products to be free of manufacturing defects. If you are not fully satisfied, notify Tech Wear immediately. Any garments which have been laundered, dry cleaned, altered, marked, or silkscreened/embroidered cannot be returned.

PRESCRIBED HOME CLEANING PROCESS FOR ECX-500 ECONOSHIELD® GARMENTS:

Cold or cool wash with commercially-available liquid laundry detergent (ie: liquid Tide, liquid Lemon Dash, liquid Cheer, Oxydol, etc.) DO NOT USE LIQUID FABRIC SOFTENERS or laundry detergents which contain added fabric softeners or bleach.

Hang dry or tumble dry at lowest temperature setting on home dryer. Garment will dry very quickly. Do not allow garment to be exposed to dryer heat longer than necessary to dry garment.

Dimensions for "Econoshield" ¾ length													
Size	XS	SML	MED	LRG	XL	2XL	3XL	4XL	5XL	6XL	7XL	8XL	
Fits Chest	30-32	34-36	38-40	42-44	46-48	50-52	54-56	58-60	62-64	66-68	70-72	74-76	
Finished Chest	38	42	46	50	54	56	62	66	70	74	78	82	
Garment Length	33	33	33	33	33	33	33	33	33	33	33	33	
Finished Sleeve	33	34	35	35	36	36	37	37	38	38	39	39	