

### Automatic Fast Super Drying System

- Automatic Drying System with specific calibration to control RH at < 5% RH with Fast Recovery Time (< 30 min. without Air / Nitrogen Purge)
- NTP Operation is unaffected by  $\Delta T$  and pressure variation
- Cost saving, with almost no maintenance required
- Maintains RH, even during temporary power outages
- Meets IPC/JEDEC J-STD-033 and IPC 1601 Standards
- Anti-Static Paint & Glass
- 110 or 220V



### Applications

This ultra-low humidity storage solution provides infinite storage for MSD. Improves yield rates of high-tech manufacturing processes, such as fabrication of LEDs, LCDs, semiconductors, and lithium batteries.

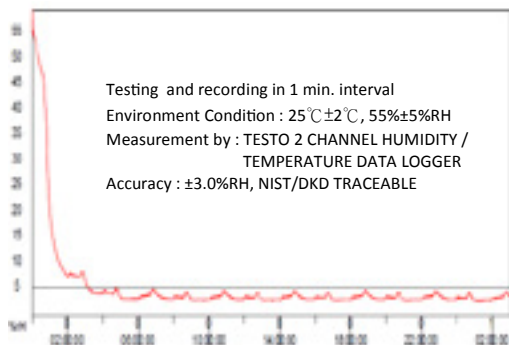
### Includes

- Stand-alone TESTO digital thermohygrometer independently monitors RH inside the cabinet
- 1M $\Omega$  Ground Wire

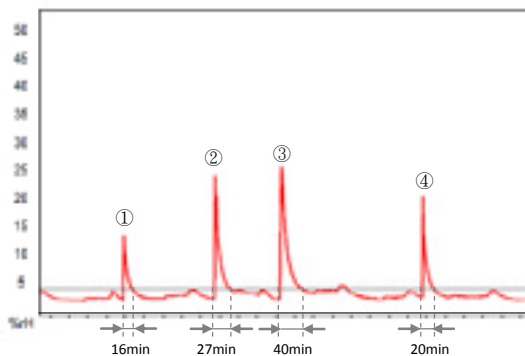


### Performance Data

CPDC-6D Dehumidified Limit <5%RH



Recovery Test Following Door Opening



- ①... Door A open for 30 sec.
- ②... Door A open for 2 min.
- ③... Door A & B open for 2 min.
- ④... Door A & B open for 30 sec.

### Specifications

Tested in a 25°C, 60% RH environment.

	1-Door Cabinet	2-Door Cabinet	3-Door Cabinet	6-Door Cabinet
Ext. Dimensions (DxWxH)	18" x 15.75" x 29.3"	23" x 34.65" x 36.61"	28.1" x 23.625" x 76.75"	28.1" x 47.25" x 76.75"
Int. Dimensions (DxWxH)	14" x 14.2" x 23.5" (11.5" Useable Depth)	18.9" x 32.67" x 31.1"	24" x 22" x 67"	24" x 43.3" x 67"
Capacity	3.5 ft <sup>3</sup> (99 L)	13.25 ft <sup>3</sup> (376 L)	23.75 ft <sup>3</sup> (665 L)	46.5 ft <sup>3</sup> (1,329 L)
Shelves	2	3	5	5
Casters Included	No	No	Yes	Yes