



Triton[®]

ENGINEERED FOR HEAVY USE



Triton

Built for extreme durability



Triton R+

Featuring our patented Rhino Plus™
technology for the most intensive
uses/conditions

The Triton Series

BUILT TO WITHSTAND THE TOUGHEST USAGE REQUIREMENTS

Triton is designed specifically for the complex challenges of Med-Tech environments and 24/7 usage. You can count on Triton to deliver reliable performance, day after day, year after year.



Triton Max

Oversized seat and back able to support a 500-lb weight capacity

YOU CAN COUNT ON TRITON TO DELIVER RELIABLE PERFORMANCE DAY AFTER DAY.

// Carbon steel frame

// Oversized cast aluminum base

// Metal-to-metal connections

// 15-year, three-shift performance guarantee

Proof that seating can be both comfortable and nearly indestructible.

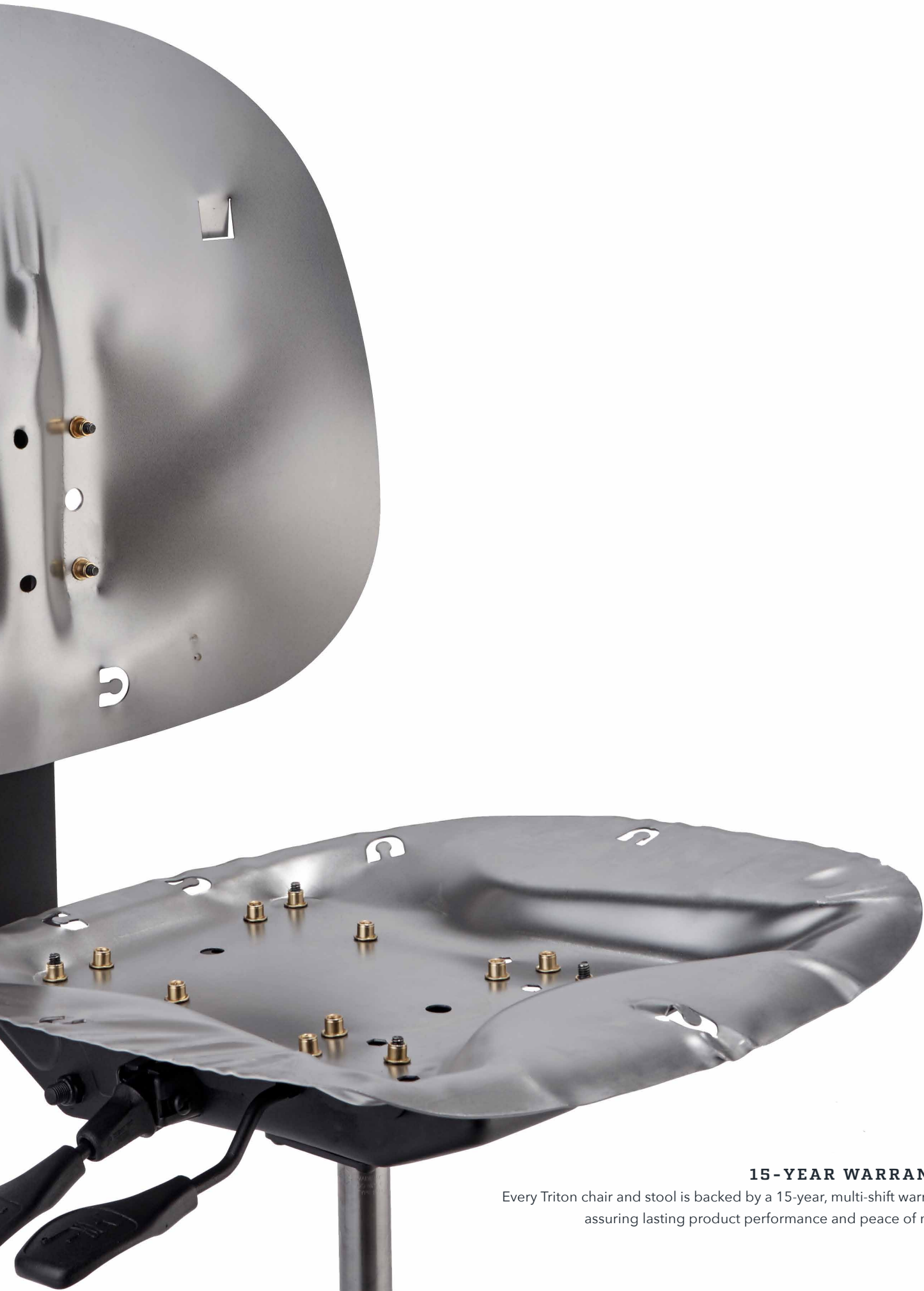
The Triton line of seating has earned its reputation as the most durable chair on the market.

At its core, Triton features a high-tensile strength, 16-gauge carbon steel frame, which is corrosion, shock, stress, and wear resistant.

Metal-to-metal connections reinforce its dependable, heavy-duty structure, resulting in very low maintenance and greater peace of mind.

Beyond its rugged frame, Triton also provides the comfortable ease of soft, posture-supporting 3-in. molded-foam cushioning.





15-YEAR WARRANTY

Every Triton chair and stool is backed by a 15-year, multi-shift warranty, assuring lasting product performance and peace of mind.

Exceptional Med-Tech seating that carries a lot of weight.

Med-Tech environments demand seating solutions that can meet rigorous standards while providing all-day support.

Triton, Triton R+, and Triton Max can easily handle maximum weight capacities from 350 lb to 500 lb due to their heavy-duty construction. Even stools can accommodate these higher than average loads.

In addition, each model offers its own unique advantages. Triton sets the standard for durability; Triton R+ features an exclusive antimicrobial, puncture-resistant polyurethane covering; and Triton Max offers a wider seat and extra-large back option.

All three seating options include a wide range of versatile configurations allowing you to select chairs or stools that are perfectly suited for your unique work requirements. All models are available in desk and stool heights.





Performance that isn't just expected; it's guaranteed.

Very few manufacturers are willing to stand behind their seating products with a 15-year, 24/7 performance guarantee.

It demonstrates the high level of confidence that Cramer has in Triton after investing years of research and testing in its development. More importantly, it indicates the peace of mind our customers receive from this very low-maintenance, long-lasting, multi-functional line of seating.



Specialists in seating solutions for sensitive Med-Tech environments

Every Cramer product is the result of rigorous engineering and design, tailored to meet the demanding standards of modern Med-Tech workspaces.

We've given equal and thoughtful consideration to both technical purpose and comfortable performance - providing long-lasting support and peace of mind.

cramerinc.com

800.366.6700