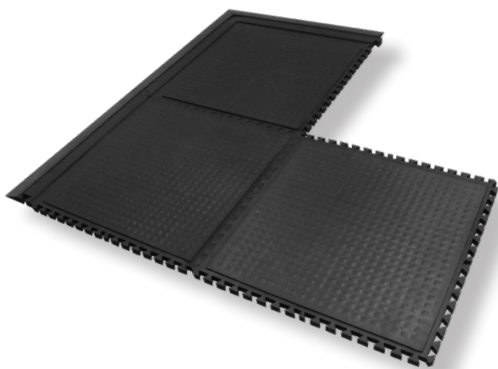


Hog Heaven IIITM Traffic Mats & Tiles

Anti-Fatigue Mats • Indoor

Hog Heaven III Traffic mats and tiles provide a customizable matting solution for areas with cart traffic. They offer ergonomic qualities yet are firm enough to support traffic from heavy carts.



Hog Heaven III Traffic Modular Tiles

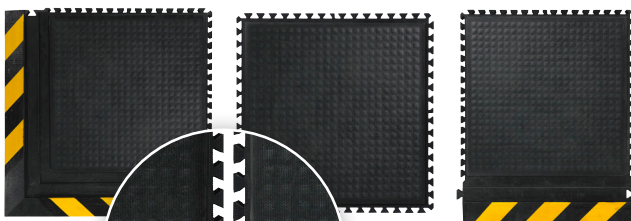
- **Firm & Durable** – Solid nitrile rubber foam lasts for years, even under heavy cart traffic
- **Comfortable** – High-density, closed-cell nitrile rubber foam provides anti-fatigue qualities to reduce the pain and fatigue associated with standing for long periods of time
- **Versatile** – Grease/oil proof; chemical resistant; welding safe; ESD rating of electrically conductive
- Mats and tiles are 5/8" thick and available with black or OSHA-approved striped yellow border
- Linkable mats can be linked together to create long runs while tiles can be linked to create custom configurations

Hog Heaven III Traffic Modular Tiles

Corner Tile

Center Tile

Side Tile



Locking Mechanism

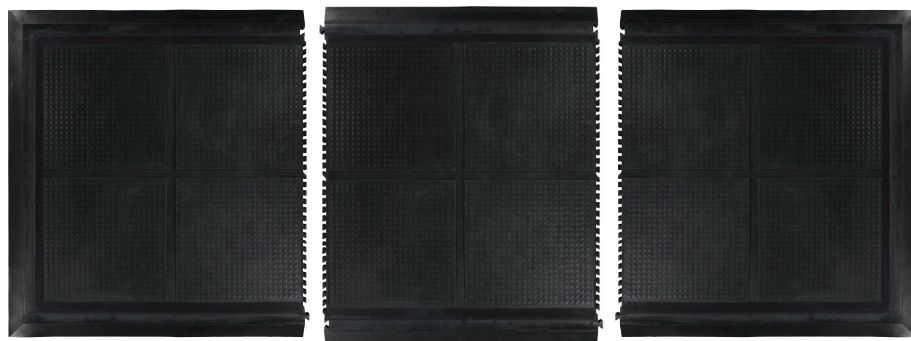
Hog Heaven III Traffic Linkable Mats and Modular Tiles feature a unique locking mechanism to ensure the mats remain tightly connected

Hog Heaven III Traffic Linkable Mats

Mat End

Mat Middle

Mat End



Hog Heaven III™ Traffic Mats & Tiles

Anti-Fatigue Mats • Indoor



Hog Heaven III Traffic Modular Tiles

Product No. 4477 (18" Modular Tiles)

Available with a black or striped border

| Tile | Size (in.) | Shipping Weight |
|-------------|--------------------------|-----------------|
| Center Tile | 18" x 18" x 5/8" | 7 lbs. |
| Side Tile | 18" x 21.875" x 5/8" | 8 lbs. |
| Corner Tile | 21.875" x 21.875" x 5/8" | 9 lbs. |

Product No. 4478 (36" Modular Tiles)

Available with a black or striped border

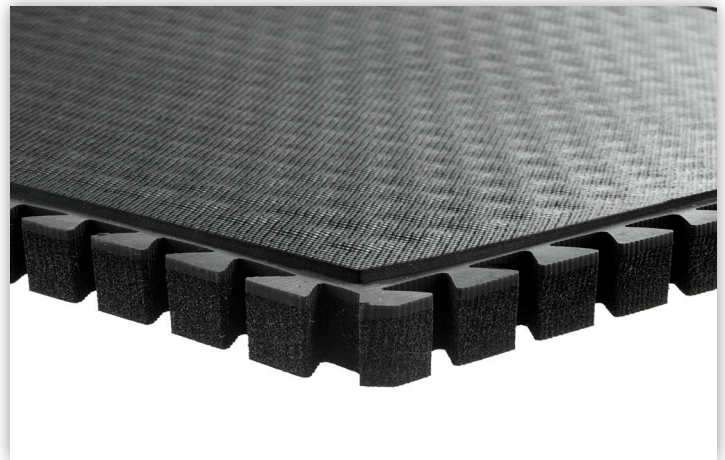
| Tile | Size (in.) | Shipping Weight |
|-------------|--------------------------|-----------------|
| Center Tile | 36" x 36" x 5/8" | 28 lbs. |
| Side Tile | 36" x 36.875" x 5/8" | 30 lbs. |
| Corner Tile | 39.875" x 39.875" x 5/8" | 32 lbs. |

Product No. 4491 (Linkable Mats - black border)

Product No. 4492 (Linkable Mats - yellow border)

| | Size (in.) | Shipping Weight |
|------------|------------------|-----------------|
| Mat End | 39.875" x 43.75" | 24 lbs. |
| Mat Middle | 36" x 43.75" | 22 lbs. |

Note: Mat sizes are approximate as rubber shrinks and expands in conjunction with temperature and time. Tolerable manufacturing size variance is 3-5%.



Hog Heaven III Traffic

P
Production

A
Automation

C
Corporation

800.903.0333

www.gotopac.com