

Description

Replace disposable sticky mats, and cost savings deliver a return on investment in 3 - 4 months. Over the 3 - 5 year life of mat, using the lowest expected life span (including cleaners), you save approximately 70%. Environmentally friendly, 100% recyclable.

We work with you to determine your specific needs: number of employees, the entry and exit cycle of the critical area, your current cleaning cycle and the level of cleanliness you need to achieve.

- Permanent, washable, tack-regenerating mats are designed specifically for the removal of coarse and fine foot-borne and wheel-borne contamination.
- Removes 98% to 100% of all surface foot-borne and wheel-borne contamination with a minimum of 3 steps or 3 wheel rotations.
- Longer life, less waste, lowest cost over both permanent and disposable alternatives.



Applications

- Inside/outside cleanroom area, air showers, gown rooms, and entry/hallways.
- Entryways to hospitals, ICUs, laboratories, burn centers, and research centers.
- Process and package areas producing excessive powders or particulate.
- General manufacturing spaces such as offices, doorways and inspection rooms.
- Control fine powders during homogenization, granulation or tablet coating.
- Prevent debris transfer during construction or remodeling.
- Gyms, sports facilities, and exercise areas.

Sizes

- Custom cut sizes and installation instructions at no charge.
- Any shape or size.
- Maximum factory delivered size with welded seams: 13.5 ft. x 120 ft. (4m x 36m)
- Master rolls available for on-site seam welding: 90 ft. x 162 ft. (27m x 49m)
- Vinyl welding allows configuration of mats for extra large areas.
- All factory delivered mats cut to exacting specs with no waste.

ESD & Bacterial Properties

- Dissipative: $1 \times 10^8 \Omega/\text{sq}$ - $1 \times 10^{10} \Omega/\text{sq}$
- Static dissipates when walking across mat.
- No layers to peel off. No risk of ESD events.
- Vinyl welds create contamination free seams.
- Bacteria resistant against *pseudomonas aeruginosa* and *staphylococcus aureus*.
- Resistant to most chemicals (Resort to manufacturer specifications).

Cleaning

- 100% of the tack is regenerated when cleaned.
- Just mop, rinse, squeegee and let dry!
- Compatible with most facility qualified detergents and bactericidal cleaners.
- Low pH Cleaner is recommended.
- Green Clean is recommended for tack regeneration.
- Resort to manufacturer specifications for proper cleaning materials.

Surface and Mobility

- Move to different locations without distortion and tearing.
- Low profile for easy and safe passage of carts and personnel.
- Adhere to any flat, clean surface.
- Cart friendly frames available upon request.
- Tested for resistance to heavy loads.
- Designed for use in heavy duty conditions.

Wet Environments

- Sealed edges support wet cleaning procedures so that no water or contaminant penetrates.
- The mats and flooring are slippery when wet.

Included with Purchase

- Mats and flooring come with a black beveled edging.
- Edging, adhesive, seam sealer, and edge sealer included.
- All mats include industry standard 2 in. wide adhesive.

Available Upon Request

- Troweled adhesive
- Trim frame for cart friendly use
- Non-residue adhesive strips
- Additional adhesive for center mats (extra large mat installations)

Installation

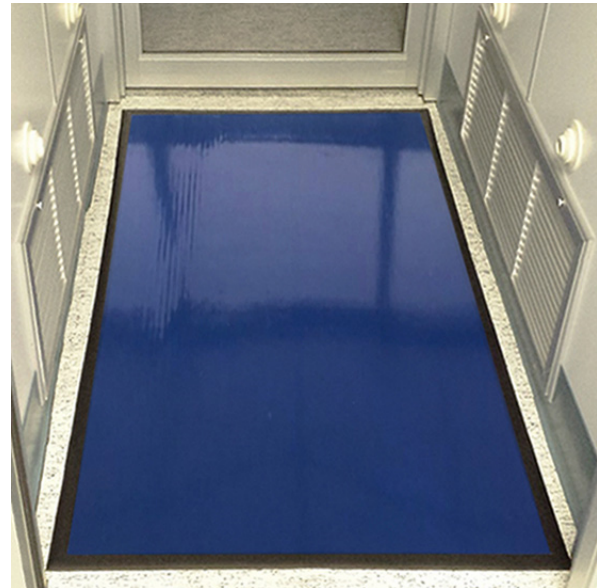
- 90% of installations do not require a contractor.
- Custom cut sizes and installation instructions at no charge.

Warranty and Lifespan

- CleanTack mats include a full 2 year warranty.
- The average lifespan is between 3 – 5 years when properly proportioned and cleaned.
- Environmentally friendly - 100% recyclable.
- Ask about our recycling service.

Product Specifications

- Standard Thickness: 90 - 100 mils
- Standard Width: Up to 4 ft.
- Standard Length: From 1 ft. (0.3m) to 50 ft. (15m)



Technical Information

- **Coefficient of Friction:**
2.02 (ASTM C1028), 4.05 TORTUS
- **Load Resistance:** 1200 PSI
- **Heat Resistance:**
32° F - 123° F (0° C - 50° C)
- **Toxicity Non-toxic:** Varies depending on specific customer needs.
- **X-Rays:** No Effect
- **Gamma Rays:** No Effect
- **Outgassing:** Negligible
- **ESD Features:** Dissipative (information available upon request)
- **Chemical Resistance:**
Resistant to most chemicals (information available upon request)
- **Bacteria Resistance:**
Prevents common bacteria (tested on pseudomonas aeruginosa and staphylococcus aureus.)