

Mod5 Series 0.50mm Pitch Flip-Top™ BGA Socket

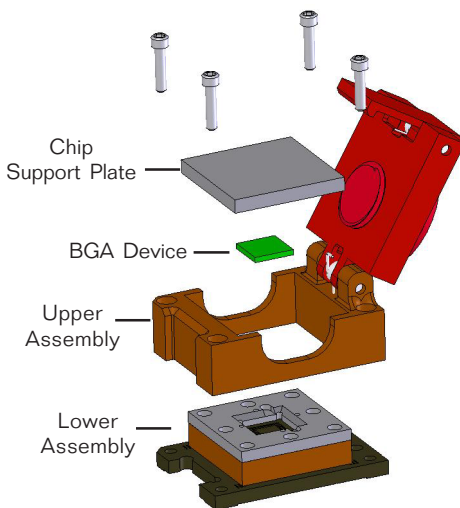


www.advanced.com

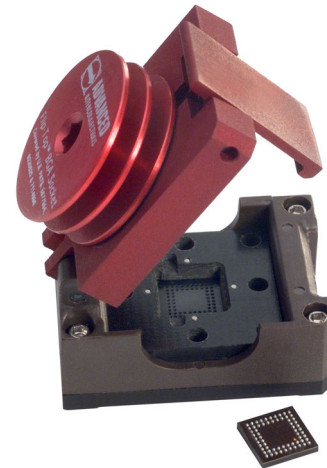
The new Mod5 Series Flip-Top™ BGA Socket is designed for test, debug, and validation of 0.50mm pitch BGA devices. The compact, surface mount design requires no tooling or mounting holes in the target PC board, maximizing real estate while reducing board costs.

The new Mod5 Series provides a compact, surface mount test solution for micro-BGA chipsets used in applications such as handheld, mobile, and wireless product development. Precision machined spring probes with industry proven solder balls ensure high reliability performance.

How It Works



- ▶ Solder **lower assembly** to PC board
- ▶ Attach **upper assembly** using four supplied screws.
- ▶ Insert **BGA device** by hand or with the aid of a vacuum pen (recommended).
- ▶ Place device-specific **chip support plate** (supplied) over device, close lid, and screw down heat sink actuator for device engagement.



TYPICAL APPLICATIONS

- Test, validation, and debug of 0.50mm pitch BGA devices
- System and wafer test
- Package and chip qualification
- Failure analysis
- Production prototype

Features

- Model shown accommodates BGA packages up to 12mm sq. (22 x 22 rows) – larger sizes available upon request
- Precision machined spring probes offer high bandwidth with very low insertion loss
- Compact size (small keepout zone) enables use on existing board layouts
- Flip-Top BGA Socket's easy actuation with simple cover and turn-screw heat sink enables quick insertion and extraction
- SMT design eliminates the cost of hardware and mounting holes and their associated interference with traces on the PCB
- Modular design of lower assembly enables simple reflow process, similar to BGA device
- Metallic probes offer proven reliability over elastomeric sockets and long-life (spring probe contact system life is 200,000 cycles minimum)
- Additional mounting options and custom designs available



5 Energy Way, West Warwick, Rhode Island 02893 USA
Tel: 800.424.9850 | 401.823.5200 | Fax: 401.823.8723
E-mail: info@advanced.com | Web: www.advanced.com

Performance

Durability

Actuation cycles: 500 minimum

Current Carrying Capacity

2.8 Amps Max.

Probe Contact Force

18 g (per position)

Probe Contact Resistance

80 mOhms

Return Loss*

Differential	Single-Ended
-10db @ 2.6 GHz	-10db @ 8.0 GHz
-15db @ 1.3 GHz	-15db @ 3.5 GHz

Insertion Loss*

Differential	Single-Ended
-0.6db @ 2.6 GHz	-2.1db @ 8.0 GHz
-0.2db @ 1.3 GHz	-0.9db @ 3.5 GHz

*Complete SI Simulation Report available online

Specifications

For Device Packages up to 12mm Square

Body Size

0.79/(20mm) W x 1.06/(27mm) L

Height

0.68/(17.4mm)* approx. (*will vary based on reflow profile, paste volume, etc.)

Guide Box

High Temp. Glass Filled Thermoplastic (PPS)
Screws: 18-8 Stainless Steel

Base Socket

FR-4 Glass Epoxy, U.L. Rated 94V-0

Lid, Latch, Heat Sink, and Support Plate

Anodized Aluminum

Spring Probe Terminals

Crown-point Plunger: Tool Steel, Gold Plated
Spring: Stainless Steel, Gold Plated
Terminal: Brass (C36000), Gold Plated

Solder Ball (Board Interface)

RoHS Compliant (Lead-free):
96.5Sn/3.0Ag/0.5Cu (SAC305)

Not RoHS (Tin/Lead):
63Sn/37Pb

Continuous Operating Temperature Range

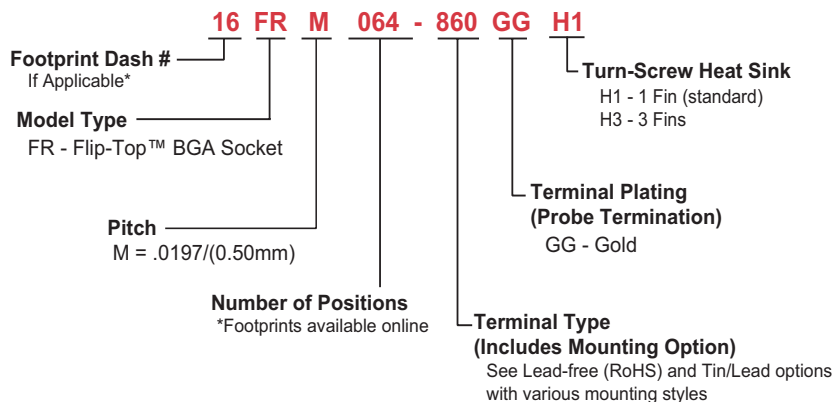
-40°C to 140°C (-40°F to 284°F)

Table of Models

MOUNTING OPTIONS	MOUNTING/TERMINAL TYPE DESIGNATION
SMT Standard Bottom View	 Terminal Type -860 Sn/Ag/Cu Solder Ball Terminal Type -861 Sn/Pb Solder Ball ■ Note 1: See Application Spec. for recommended adhesive (epoxy) instructions*
SMT/Screw Mount Bottom View	 Terminal Type -864 Sn/Ag/Cu Solder Ball Terminal Type -865 Sn/Pb Solder Ball ■ Note 2: Screws provided for additional strain relief when needed; reflow still required*
SMT Plus Bottom View	 Terminal Type -862 Sn/Ag/Cu Solder Ball Terminal Type -863 Sn/Pb Solder Ball ■ Note 3: Additional solder balls provided for strain relief in low pin count SMT applications*

*See product Application Specification for complete mounting details.

How To Order



- 4-point crown tip spring probes accurately align device solder balls, leaving only minimal witness marks to preserve the solder ball integrity
- Visit www.bgasockets.com to select a footprint or submit your device mechanical specifications to info@advanced.com
- Device mechanical specifications are required prior to ordering to ensure accuracy of device-specific chip support plate
- Sockets are packaged in foam-lined cartons



5 Energy Way, West Warwick, Rhode Island 02893 USA
Tel: 800.424.9850 | 401.823.5200 | Fax: 401.823.8723
E-mail: info@advanced.com | Web: www.advanced.com